

# ALL WORLDS

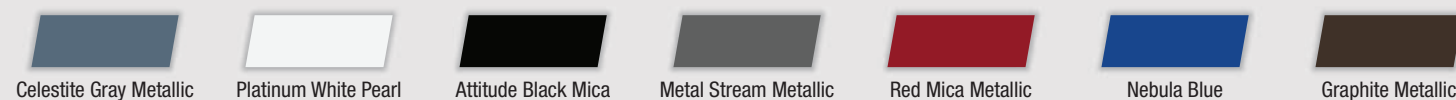


Introducing The All New Toyota  
**COROLLA  
CROSS  
HYBRID**

DIMENSIONS		Premium - High Grade	Smart - Mid Grade	Low Grade
Length x Width x Height	mm		4460 x 1825 x 1620	
Wheel Base	mm		2640	
Minimum Turning Radius (Tire/Body)	m		5.2/5.5	
Fuel Tank Capacity	L		36	
PERFORMANCE				
Engine			2ZR-FXE (Hybrid)	
Displacement	cc		1798	
Engine Power	kW@rpm		72/5200	
Engine Torque	Nm@rpm		142/3600	
Electric Motor Power	kW		53	
Electric Motor Torque	Nm		163	
EV Mode			0	
Drive Modes			Power + ECO	
Exhaust Emission Control			Euro 4	
Brake (Front / Rear)			16" Ventilated Disc/16" Disc	
Suspension (Front / Rear)			MacPherson Strut/Torsion-Beam	
Transmission			Continuously Variable Transmission (CVT)	
EXTERIOR				
Wheel Type			17" Alloys Rims	
Tire Size			215/60 R17	
Headlamps			LED Projector	Halogen Projector
Light Control System			Auto Light System with Follow Me Home	
Rear Combination Lamp			LED Light Curtain	LED
Daytime Running Lamp			Curtain Type LED	
Outside Rear View Mirror			Electric + Auto Fold + Side Turn Signal	
Front Fog Lamp			O (LED)	
Antenna			Shark Fin	
Door Outside Handle			Body Color	
Wind Shield Wiper Control			Auto ( Rain Sensor)	Intermittent (Time Adjustment)
Rear Window Wiper			O (Intermittent+Washer)	
Front Grill			Gunmetal Painted Finish	Pigmented Black
Roof Rail		O		X
Inside Rear View Mirror		EC mirror		Day & Night
Luggage Opener		O (Power + Kick Sensor)		O
INTERIOR				
Power Window			O (All-Auto Up/Down)	
Room Lamp		Personal Type		Dome Type
Glove Box Lamp		O		X
Head Lamp Leveling			O (Manual)	
Seat Pocket		O (Passenger)		X
Rear Console Box		PVC + Piano Black with Slide		Fabric + Resin
Luggage Tray			O	
Front Seat Adjuster		Driver (Power) 6-Way & Passenger (Manual)		Driver + Passenger (Manual)
Vertical Height Adjuster		Driver Only (Power)		Driver Only (Manual)
Rear Seat Reclining			60:40 Folding with Reclining	
Air Conditioner with Climate Control			Auto A/C Dual Mode	Auto A/C Single Mode
Rear Air Conditioner			Vents Only	X
Rear Arm Rest			O (with Cup Holder)	
Multi Information Display		Color 7 Inch Display		Color 4.2 Inch Display
Starting System			Push Start	
Wireless Door Lock			Smart Entry	
Power Steering			EPS	
Steering Column			Tilt & Telescopic	
Parking Break			Pedal Type	
Moonroof		O		X
Speakers			6	
Entertainment System			8 Inch Entertainment System	Basic with CD/BD
Cruise Control			O	X
Steering Wheel			3-Spoke Leather	3-Spoke Urethane
Wind Shield Glass			Laminated Green (Acoustic)	
Accessory Connector		Front USB x 1 + Rear USB x 2		Front USB x 1
Steering Switches		O (+ Cruise Control)		O
Economy Meter			Hybrid System Indicator	
Centre Console		12V Power Socket with Sliding Armrest		12V Power Socket with Armrest
Door Inside Handle			Plating	Fabric
Seat Fabric		Leather		
SAFETY				
Braking System			Anti-Lock Braking System (ABS) + Electronic Brake Force Distribution (EBD) + Break Assist (BA)	
Vehicle Stability Control (VSC)			O	
Seat Belts	Front Rear		3 Point ELR + Pretensioner + Force Limiter	
Hill Start Assist			3 Point ELR	
Airbags			O	
Immobilizer		Driver + Passenger + Side + Curtain + Driver Knee		Driver + Passenger
Child Restraint System			O With Alarm (Horn)	
Emergency Stop Signal			O (ISO FIX)	
Clearance and Back Sonar			O	
Occupant Seat Sensor			Front x 2 & Rear x 4	Corner Sensor: Rear x 2
			Passenger Seat Sensor	

\*Indus Motor Company Ltd. reserves the right to alter any details of specification and equipment without notice  
\*\*Terms and Conditions Apply

### EXTERIOR COLOURS



**TOYOTA** | Indus Motor Company Ltd.

www.toyota-indus.com | ToyotaPakistanOfficial | @ToyotaPak



# THE BEST OF



# HYBRID

Pakistan's First Hybrid SUV



## 4<sup>TH</sup> GEN HYBRID ENGINE

The most advanced 2ZR-FXE hybrid engine and the battery work seamlessly to enhance a smooth driving experience and provide maximum power to let you conquer every journey.

Embrace the fuel efficiency through advanced Hybrid Synergy Drive that allows you to go further.



## ADVANCED DRIVE MODES

You are in command! Choose your driving experience with ECO, EV and PWR modes.



## ELEGANT AND STYLISH INTERIOR

An exquisite Terra Rossa interior with leather seats which reflect elegance and sophistication.

# GROW BOLDER EVERY TIME YOU DRIVE

## ASCEND TO NEW HEIGHTS

You're ready for a fresh start, go to more places and see more people. This car suits your life today. That next level of fulfillment you've been seeking. This is the **COROLLA CROSS**. This is the SUV you dreamed about. This is the SUV you worked for. Now, it's well within your reach.



PUSH START WITH SMART ENTRY

8" ENTERTAINMENT SYSTEM

LED PROJECTION HEADLAMPS WITH CURTAIN DRLs

POWER TAILGATE WITH KICK SENSOR

REAR A/C VENTS

17" ALLOY RIMS

MOONROOF

DUAL ZONE AUTOMATIC CLIMATE CONTROL



## THE WORLD IS YOURS TO EXPLORE

Sharp exterior styling, a generous interior and handcrafted details forge the ultimate expression of beauty in strength.



LEATHER SEATS



7" COLOR MID (MULTI INFORMATION DISPLAY)



STEERING SWITCHES



POWERED DRIVER SEAT



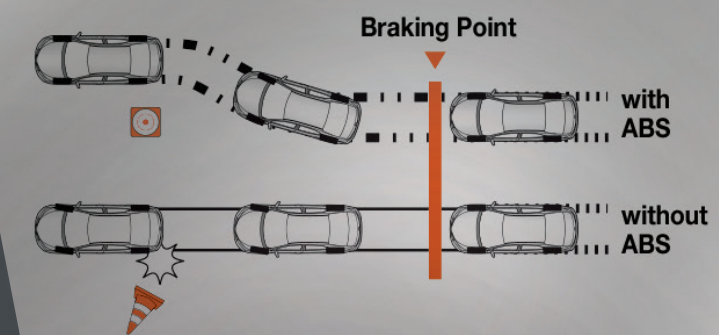
FOG LAMPS

## FEEL SAFE AND LET THE GOOD TIMES ROLL



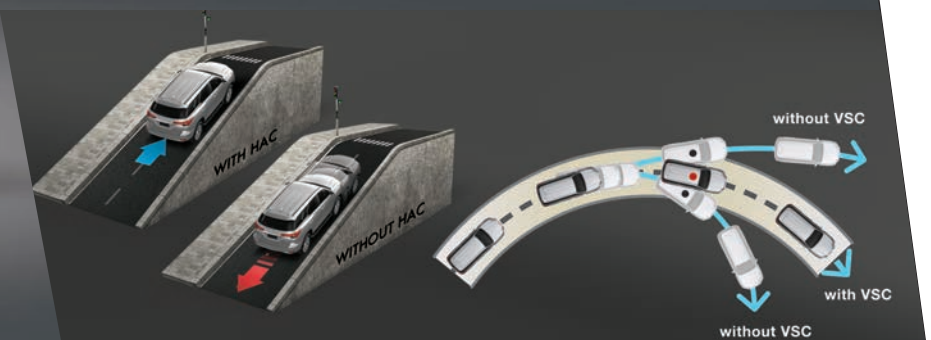
## FEEL PROTECTED

Corolla Cross keeps you safe throughout your exhilarating journey. Corolla Cross provides the most comprehensive safety system with 7 airbags.



## ROBUST BRAKING SYSTEM

Corolla Cross keeps you safe with its state-of-the-art features that help protect the passenger in an emergency situation. Corolla Cross comes equipped with Anti-Lock Braking System (ABS), Electronic Brakeforce Distribution (EBD) and Brake Assist (BA).



## POWER WITH CONTROL

In Corolla Cross your safety is prioritized which helps you overtake the hardest obstacles with our Hill Start Assist and Vehicle Stability Control (VSC).