

**Movement that inspires**

At Kia, we believe movement inspires ideas. Great ideas come to you when you're on the move. Whether you're walking, traveling on a train or driving. It's why we create the spaces and the time you need to bring ideas to life.

All information, illustrations and specifications are accurate at the time of printing and are subject to change without notice.

This brochure is intended for reference purposes only. Specifications may vary based on the model. The model, colors, numerics, and specifications shown in this brochure may vary from the actual product. Contact your local Kia dealer for current information and full warranty details including terms and conditions.

Kia Pakistan reserves the right to discontinue or change the models, features, specifications, options, designs and prices of products referred to in this sheet without incurring any liability whatsoever to any purchaser or prospective purchaser of any such products.

Safety technologies are designed as supplementary systems and do not substitute the driver's responsibility to remain attentive and exercise caution. Advanced safety technologies operate under specific conditions. Radar and sensor-based features are intended to assist the driver in operating the vehicle safely, but their functionality may be influenced by various conditions. The driver remains fully responsible for timely braking and vehicle control at all times. Safe driving is ultimately the driver's responsibility. The capabilities of Kia Drive Wise may be limited in situations such as sharp turns, driving on inclines or declines, intense glare, unexpected lane changes by other vehicles, or the presence of blind spots. Study owner's manual for exact information.

Performance metrics are based on controlled conditions. Actual driving performance may vary depending on environmental factors, vehicle conditions, and driver skills.

Harman/Kardon® is a registered trademark of Harman International Industries, Incorporated. Not all mobile phones will be compatible with the vehicle's Bluetooth® system. Bluetooth® is a registered trademark of Bluetooth SIG.

Android Auto™ connectivity requires a compatible Android device. Android Auto™ is a registered trademark of Google Inc. Apple CarPlay™ connectivity requires a compatible iOS device. Apple CarPlay™ is a registered trademark of Apple Inc.



Movement that inspires



/KiaMotorsPakistan



/kiamotorsPakistan



/KiaMotorsPakistan



+92 303 5425420



UAN: (021) 111 111 542

# The all-new Sportage L

## Redefining the Legacy



Movement that inspires



# Kia Leading Innovation and Global Excellence

Kia Corporation, founded in 1944, is South Korea’s oldest automaker and a global leader in producing SUVs, sedans, and electric vehicles. Headquartered in Seoul, Kia focuses on sustainability and advanced design, positioning itself as a forward-thinking brand.

Its global R&D centers support this vision: the Nanyang center in South Korea develops performance and safety features, the Kia American Technical Center caters to North American needs, the Frankfurt center focuses on European validation, and the China R&D center tailors vehicles for the local market. Additionally, Kia’s Japan center advances hybrid and electric vehicle technologies. These hubs help integrate cutting-edge technology, safety, and eco-friendly solutions in vehicles worldwide.



## Movement That Inspires

All creative activities begin with a movement!

As designers of movement,  
with the vision to create sustainable mobility solutions  
for the consumers, community, and the global society,  
our purpose at Kia is to deliver innovative products  
that inspire you when you move and  
deliver convenient and meaningful services  
demonstrating our commitment  
with everyone’s most valuable resource,  
your time.



# Opposites United Philosophy

We bring you our new design philosophy: OPPOSITES UNITED. It is a guiding system of values that informs every project, shapes every initiative, and directs every action. To unite opposites doesn't mean balancing positives with negatives but discovering that "zero degree" — a harmonious equilibrium where contrasts coexist in a state of calm, inspiring fresh ideas and experiences.

OPPOSITES UNITED embodies a bold vision for the future. It demands relentless innovation, courageous risks to challenge the status quo, and leadership in shaping a new creative culture. By embracing opposition and leveraging concepts of disruption and contrast, Kia evolves its identity and designs with a distinctive character.

This philosophy sets us apart, marking a new chapter as Kia adapts to a changing world. Inspired by these transformations, we invite you to join us as we shape the future together.



# The Inception of Lucky Motor Corporation

Lucky Motor Corporation (LMC), a subsidiary of Lucky Cement Limited (LCL), celebrated its fifth anniversary in June 2024. The company operates through three key business divisions: Automotive, Auto Parts, and Electronics. The Automotive division focuses on the assembly, marketing, distribution, and sales of Kia vehicles, along with their parts and accessories, within Pakistan. The Auto Parts division was established with the goal of localizing production for the auto parts required in locally assembled Kia models, contributing to greater self-sufficiency and cost efficiency.

LMC stands out for its distinctive operations and strategic portfolio diversification, consistently creating significant value for its stakeholders and reinforcing its position as an industry leader.



# A Legacy of Trust

With decades of proven reliability and exceptional performance, the Kia Sportage has built a reputation for trustworthiness. Its commitment to quality craftsmanship and innovative features ensures a dependable driving experience, making it a trusted choice for drivers worldwide.







## Broaden your Horizons. For endless Inspiration.

The all-new Sportage L (Long Wheelbase) depicts a bold and contemporary design. Clean, muscular surfaces paired with aggressive and powerful graphics give the car a dynamic, assertive presence on the road. Built with the latest innovation, so you feel more confident when you're on the move. No matter where life takes you. For those who keep moving. For those who keep seeking. Inspiration is never out of reach.

**Bold, Sleek, and Sporty**  
Best-in-class length and long wheelbase redefine urban SUVs.

Strong-shouldered, muscular surfaces blend with aggressive graphics, while fluid, dynamic sidelines craft a striking three-dimensional aesthetic. The long wheelbase enhances stability and road presence, making the all-new Sportage L ideal for both urban drives and long journeys.



# Bold New Design



**Star Chain Grille, Boomerang DRLs & Rhombus Front Headlamps**  
The bold star-chain grille, iconic boomerang DRLs, and sophisticated rhombus LED headlamps create a dynamic presence with futuristic style and exceptional visibility.



**Notch-shaped LED Rear Lamps and Rear Spoiler**  
The notch-shaped LED rear lamps, connected by a sleek black bezel, create a unified look. The high-mounted rear spoiler features a slim, broad stop lamp.



**LED Fog Lamps**  
Ensure clear visibility even in the toughest conditions.



**High-Gloss Flag Exterior Mirrors**  
Enhance visibility and add a sporty, distinctive look.



**Wedge-shaped Side Sill Garnish**  
Sporty side garnish design creates a rugged look that sets the Kia Sportage L apart.



**C-Pillar Garnish**  
The two-tone outside mirror, combining black and body colors, creates a sophisticated image.



**Large Black Rear Bumper**  
The vertical reflector and black skid plate molding help to create a tough and exclusive image.



**Glossy Black Roof Rack**  
An exclusive glossy black rack adds a sporty touch.



Space Innovation.  
Intelligent and Immersive.

Everything is designed around the driver. From the immersive high-tech curved integrated display to intelligent, easy-to-use controls, Wi-Fi, wireless charging, and mobile paired audio. Connectivity is more seamless than ever. So you can have all the right technologies, in all the right places.



## Comfort for Everyone.

The all-new Sportage L offers an impressive road presence and unparalleled interior spaciousness, driven by its remarkable extended length. With ample headroom and legroom for all passengers, its firm and supportive seats enhance comfort while projecting a bold and confident image.



# Expand your Viewing Experience.

With an open view of the world outside, feel more connected to the world around you even when inside your car. Controls are integrated into simple and self-contained displays, allowing you to explore your surroundings without distraction.



**Panoramic Sunroof**  
The broad panoramic sunroof adds a feeling of light and space to the interior, and offers unrestricted scenic views. With one touch, it will let in sunlight, starlight, and breezes to help everyone stay cool and refreshed.



**Dual 12.3" High-Tech Curved Integrated Display**  
The 12.3" instrument panel and 12.3" curved center screen visually amplify the interior space and deliver a high level of technology, a near-cinematic display, and a user-friendly interface. Simple graphics and touch commands give the driver top priority.

Simple and intuitive design for climate and audio controls.



**Android Auto / Apple CarPlay**  
The infotainment and audio systems offer wireless integration with mobile devices via Android Auto or Apple CarPlay.



**Infotainment/Climate Switchable Controller**  
Infotainment and climate functions share the same LCD softkey keyboard. This improves the intuitiveness and luxury of the cockpit design. Press the fan icon button to transform the controls on the right to climate. Press the arrow icon button to switch them to infotainment.



**Tire Pressure Monitoring System**  
Stay in control with real-time tire pressure monitoring displayed on the cluster, ensuring safety and confidence on every drive.



**Advanced Driver Assistance**  
Enhance your journey with advanced Driver Assistance features displayed on the infotainment screen, providing real-time alerts and support for a safer, more convenient drive.



**Multiple Drive Modes**  
Integrated Drive Mode Select system allows drivers to seamlessly switch between various driving modes.



Convenient space to stow your phone and other devices



**High-Tech Console Design**  
Innovative asymmetrical console layout is sporty and more driver-oriented.



**Wireless Charging Tray**  
Fast and convenient wireless charger compatible with most smartphones for seamless charging.



**Variable Cupholders & Multiple Tray**  
The center console cupholders disassemble when not in use, so tablets and other flat items can fit in the same space.



**Electronic Parking Brake (EPB)**  
Press the console EPB button when parking.  
EPB disengages in drive or reverse when you press the accelerator.

# Built on Innovation.



**Ambient Mood Lighting**  
Create a stylish and personalized atmosphere with 64-color ambient lighting that adapts to different moods.  
The semi-reflective linear chrome garnish elegantly transforms into ambient lighting.



**6 Harman Kardon Speakers + 1 Bass Booster**  
Exceptional in-car entertainment with 6 high-powered speakers, an external booster, and Active Sound Design (ASD) that bring your podcasts and playlists to life with stunning audio quality.

# Convenience is in the details.

Versatile seats that can be adapted to your changing needs. Whether that means cooling off, having a place to hang your coat, or making extra space for things you suddenly realize you need to bring along. The all-new Sportage L caters to all your detailed needs.



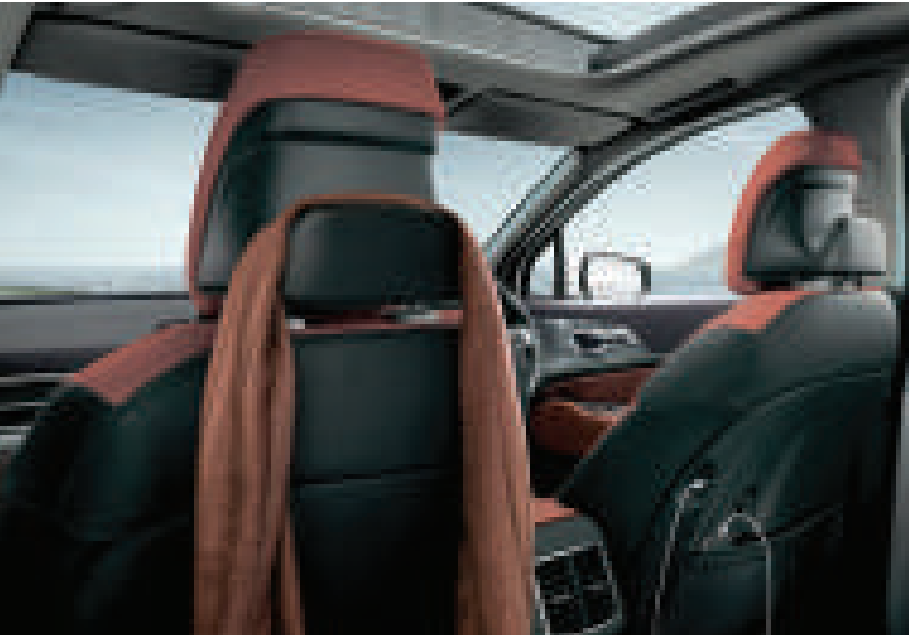
**Remote 2nd- Row Seatback Folding**  
Pull the release lever on the cargo-space wall to fold the 60/40 split rear seatback down. It saves you the inconvenience of leaning or climbing in when handling long or bulky items.



**Smart Power Memory Tailgate**  
Easily adjustable to suit your height and loading needs, the smart memory tailgate offers convenience with customizable height and speed settings.



**Heated Front Seats**  
Enjoy a more comfortable ride no matter what the weather is like outside while controlling the front-seat heat levels.



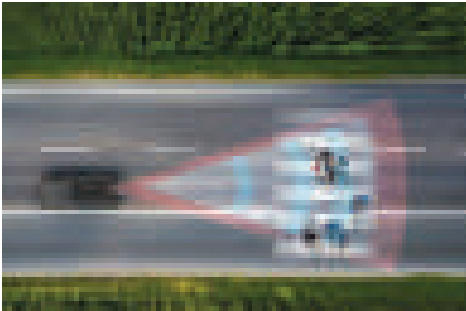
**Headrest Hanger / USB Ports on Seatbacks**  
The backs of the front headrests include built-in, shape-preserving coat hangers. Rear seat passengers will find convenient USB-C charging ports in the seatbacks ahead of them.



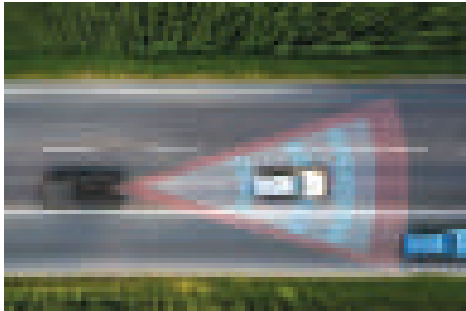
# Kia Drive Wise - Driving Technology that protects.

Observing, sensing, and stepping in whenever you need assistance: Kia's Drive Wise applies the latest Advanced Driver Assistance System (ADAS) technologies to help keep you alert, safe and in control. This ensures the ultimate experience in occupant and pedestrian safety.

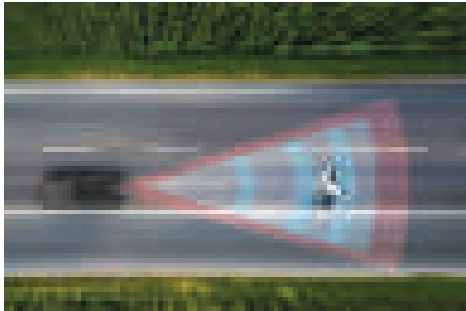
**Forward Collision-Avoidance Assist (FCA)** Using a front view camera and front radar (optional), FCA can detect a vehicle, a pedestrian, or a cyclist ahead. It can warn you, or even brake automatically. FCA also works when crossing or turning right at an intersection.



Pedestrian



Car



Cyclist



Junction Turning



**Rear Cross-Traffic Collision-Avoidance Assist (RCCA)**  
A parking safety function designed to help prevent collisions with vehicles approaching from the left or right while reversing. It provides a warning when the risk of a collision with an oncoming vehicle is detected during low-speed reversing. If the risk increases, RCCA automatically assists with braking to enhance safety and reduce the likelihood of an accident.



**Lane Following Assist (LFA)**  
To help you center the vehicle in the lane while driving, LFA uses the front view camera to help guide the steering, based on lane markings or the car ahead.



**Lane Keeping Assist (LKA)**  
Warns if a lane departure is detected without a turn signal switch operation. Automatically assists steering to prevent the vehicle from departing the lane only if a lane departure is detected without a turn signal switch operation.



**Blind-Spot View Monitor (BVM)**  
When you indicate a lane change, BVM displays a rear side view of the lane you plan to enter. The image appears in the cluster to help you maneuver safely.



**Smart Cruise Control (SCC)**  
Smart Cruise Control helps you maintain distance from the vehicle ahead, and drive at the speed you set. The vehicle stops automatically, and can resume automatically if the pause is brief.

One can never be too cautious.

ADAS technology offers an extra pair of eyes to help you in any situation. When you are on the move, while you are parking, when you are backing out, and even when you are stepping out of your vehicle. Feel protected.

**Blind-Spot Collision-Avoidance Assist (BCA)** If you signal a lane change and BCA detects a risk of a collision with a vehicle approaching from the rear, it will automatically assist with braking to help avoid a collision.



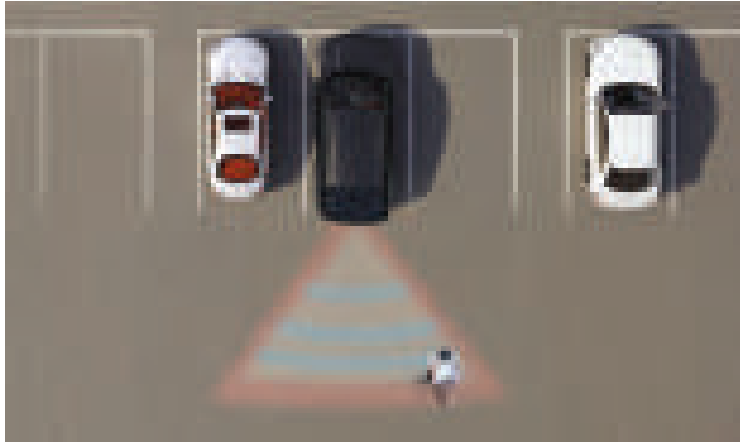
**Safe Exit Warning (SEW)**  
A driving safety function that provides a warning when a vehicle is approaching from the rear-side while someone is getting out of the vehicle.



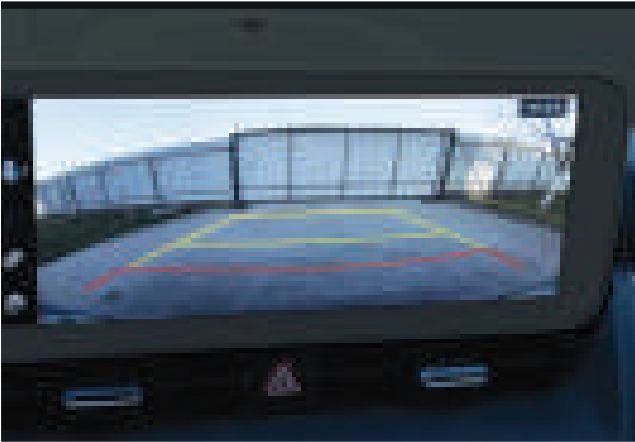
**High Beam Assist (HBA)**  
Adjusting automatically based on surrounding lighting, it identifies the opposing vehicle's light source, optimizing both high and low beams for safer and more convenient night driving.



**Surround View Monitor (SVM)**  
When you steer in a confined space, multiple cameras give you a zoomable, 360° overhead view, helping you park without having to get out to check, or ask others for help.



**Parking Collision Avoidance Assist (PCA)**  
PCA helps prevent collisions with pedestrians or obstacles during parking or low-speed travel. It detects obstacles and alerts the driver with visual and audible alarms while automatically applying brakes to avoid impact.



**Rear View Monitor with Dynamic Guidelines**  
A parking safety feature that displays the rear view with parking guidelines using the rear view camera. It provides a rear top view for parking and trailer hooking and offers a continuous rear view while driving for enhanced safety.



**Driver Attention Warning (DAW)**  
DAW alerts the driver if their attention decreases to a certain level and incorporates a feature to warn them when the vehicle ahead begins to move.



**Front & Rear Sensors**  
Detects the distance and orientation of obstacles both in front and behind when parking or reversing, sounding alarms when approaching obstacles.



# Unleash Power and Efficiency



Experience the all-new Sportage L, equipped with two of the most powerful SmartStream engines in its class. Delivering exceptional performance and efficiency, the Kia Sportage L strikes the perfect balance between thrilling power and optimized fuel economy, setting a new standard for C-SUVs.



**SmartStream G2.0**  
Maximum Power: 154 hp  
Maximum Torque: 192 Nm  
Transmission Speed: 6AT



**SmartStream G1.6T-GDI HEV**  
Engine  
Maximum Power: 177 hp  
Maximum Torque: 265 Nm  
Motor  
Maximum Power: 59 hp  
Maximum Torque: 265 Nm  
Combined  
Maximum Power: 227 hp  
Maximum Torque: 350 Nm  
Transmission Speed: 6AT



# Agile, Responsive Performance.

Driving surfaces change unexpectedly when you're on the move. The all-new Sportage L responds to these changes quickly using the latest sensing and stability technology. Drive Mode Select helps keep performance balanced and smooth, even when the road isn't.



**Paddle Shifters**

Located behind the steering wheel, paddle shifters allow drivers to easily switch gears without using the brakes and provide a sportier, smoother driving experience.

**Drive Mode Select (DMS)**

Integrated Drive Mode Select system allows drivers to seamlessly switch between Eco, Smart, and Sport modes.



**Shift by Wire (SBW)**

Enhanced with a comfortable grip and high-class feel, dial-type SBW is easy to operate, and boasts an excellent sense of quality.





Interior Colors



One-Tone Carmine Red for HEV



Two-Tone Navy Misty Grey for FWD



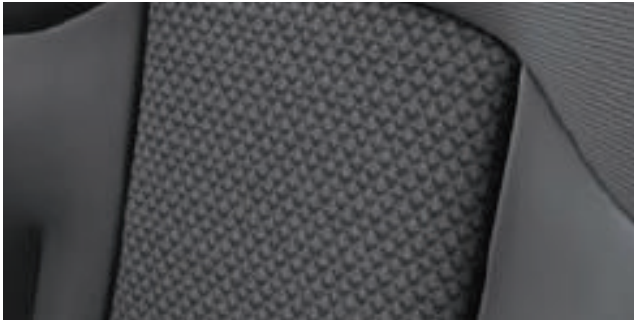
One-Tone Black for ALPHA



Artificial Leather



Leather



Cloth

Exterior Colors



Clear White



Gravity Blue



Gravity Grey

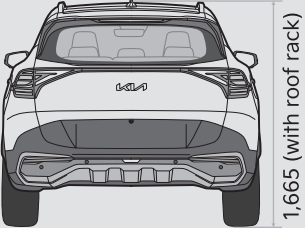
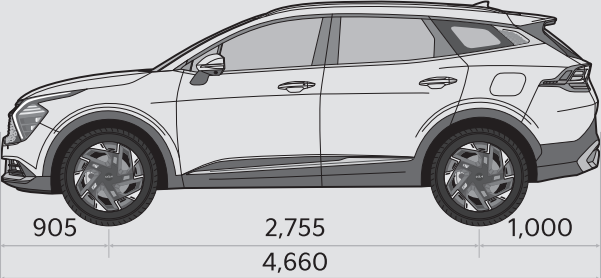
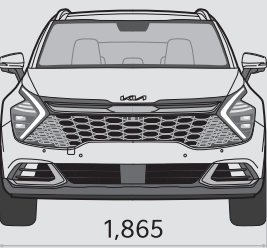


Interstellar Grey

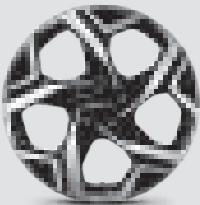


Fusion Black

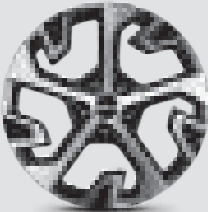
Vehicle Dimensions



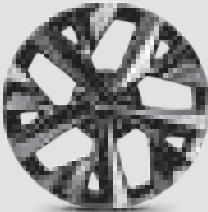
Wheels



17" Alloy wheel  
(ALPHA)



18" Alloy wheel  
(FWD)



18" Alloy wheel  
(HEV)

Dimensions

|                               |       |
|-------------------------------|-------|
| Length (mm)                   | 4,660 |
| Width (mm)                    | 1,865 |
| Height (mm)                   | 1,665 |
| Minimum Ground Clearance (mm) | 181   |
| Wheel Base (mm)               | 2,755 |

# Highlights & Additional Features



8 Inch Display Audio



Supervision Cluster (4.2-inch Color TFT LCD)



2-Way Lumbar Support (Driver)



2nd Row Rear AC Vents



Auto Gear Shift



Personal Reading Lamp



Heated Steering Wheel



USB-C in Front Seat Backs



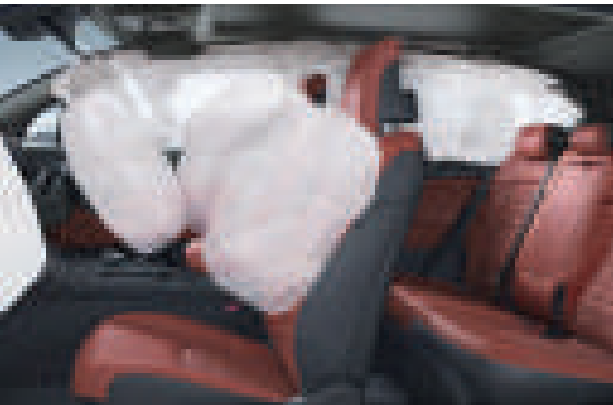
Dual-Zone Auto Climate Control



Adjustable Center Arm Rest



Spare Wheel



6 SRS Airbags





When you move,  
inspiration is never out of reach.

## The all-new Sportage L

Even with its bold and imposing front volume, the Kia Sportage L stays true to its dynamic sporting heritage. Tense and precise feature lines elegantly cut across the sleek and refined body surfaces, seamlessly blending the volumes together to naturally embody the vehicle's emotional inspiration.

Specification Sheet

| FEATURES                               | ALPHA                       | FWD                         | HEV                      |
|--|-----------------------------|-----------------------------|--------------------------|
| Engine                                 |                             |                             |                          |
| Engine Type                            | SmartStream G2.0            | SmartStream G2.0            | SmartStream G1.6T GDI    |
| Displacement (cc)                      | 1,999                       | 1,999                       | 1,598                    |
| Engine Maximum Power (hp)              | 154                         | 154                         | 177                      |
| Engine Maximum Torque (Nm/rpm)         | 192/4500                    | 192/4500                    | 265/1500~4500            |
| Motor Maximum Power (hp)               | X                           | X                           | 59                       |
| Motor Maximum Torque (Nm/rpm)          | X                           | X                           | 264/1600                 |
| Combined Maximum Power (hp)            | X                           | X                           | 227                      |
| Combined Maximum Torque (Nm/rpm)       | X                           | X                           | 350                      |
| Bore x Stroke (mm)                     | 81 x 97                     | 81 x 97                     | 75.6 x 89                |
| Compression Ratio                      | 10.8:1                      | 10.8:1                      | 10.5:1                   |
| Fuel                                   |                             |                             |                          |
| Fuel Supply System                     | Multi Point Injection (MPI) | Multi Point Injection (MPI) | Direct Injection (GDI)   |
| Fuel Tank Capacity                     | 54L                         | 54L                         | 52L                      |
| Battery                                |                             |                             |                          |
| Hybrid                                 | X                           | X                           | ●                        |
| Battery Type                           | X                           | X                           | Lithium-Ion              |
| Battery Voltage (V)                    | X                           | X                           | 270                      |
| Battery Energy (kWh)                   | X                           | X                           | 1.49                     |
| Battery Capacity (Ah)                  | X                           | X                           | 5.5                      |
| Transmission                           |                             |                             |                          |
| Drivetrain                             | Front Wheel Drive           | Front Wheel Drive           | Front Wheel Drive        |
| Transmission Type                      | 6 Speed Automatic           | 6 Speed Automatic           | 6 Speed Automatic        |
| Auto Shift                             | Auto Gear Shift             | Auto Gear Shift             | X                        |
| Shift by Wire                          | X                           | X                           | ●                        |
| Dimensions                             |                             |                             |                          |
| Length (mm)                            | 4,660                       | 4,660                       | 4,660                    |
| Width (mm)                             | 1,865                       | 1,865                       | 1,865                    |
| Height (mm)                            | 1,665                       | 1,665                       | 1,665                    |
| Minimum Ground Clearance (mm)          | 181                         | 181                         | 181                      |
| Wheel Base (mm)                        | 2,755                       | 2,755                       | 2,755                    |
| Luggage Capacity (L)                   | 1,872                       | 1,829                       | 1,776                    |
| Steering, Brakes & Suspension          |                             |                             |                          |
| Power Steering System                  | Column MDPS                 | Column MDPS                 | Column MDPS              |
| Steering Column                        | Manual Tilt & Telescopic    | Manual Tilt & Telescopic    | Manual Tilt & Telescopic |
| Drive Modes                            | Eco , Normal, Sport, Smart  | Eco , Normal, Sport, Smart  | Eco, Smart, Sport        |
| Front Brake                            | 16 Inch                     | 16 Inch                     | 17 Inch                  |
| Rear Brake                             | 16 Inch                     | 16 Inch                     | 16 Inch                  |
| Electronic Parking Brake with Autohold | ●                           | ●                           | ●                        |
| Front Suspension                       | Macpherson Strut Type       | Macpherson Strut Type       | Macpherson Strut Type    |
| Back Suspension                        | Multi Link Type             | Multi Link Type             | Multi Link Type          |
| Manual Speed Limit Assist              | ●                           | ●                           | ●                        |

| FEATURES   | ALPHA                                  | FWD                       | HEV                       |
|--|--|---------------------------|---------------------------|
| Wheels & Tyres   |  |                           |                           |
| Tire   | 235/65 R17                             | 235/60 R18                | 235/60 R18                |
| Wheel Size   | 17"                                    | 18"                       | 18"                       |
| Spare Wheel Type   | Temporary Steel                        | Full Size Alloy           | Steel (Donut)             |
| Tire Pressure Monitoring System  | ●                                      | ●                         | ●                         |
| Active Safety  |  |                           |                           |
| ABS (Anti-Lock Braking System)   | ●                                      | ●                         | ●                         |
| ESC (Electronic Stability Control)   | ●                                      | ●                         | ●                         |
| DBC (Downhill Brake Control)   | ●                                      | ●                         | ●                         |
| HAC (Hill-Start Assist Control)  | ●                                      | ●                         | ●                         |
| TSA (Trailer Stability Assist)   | X                                      | X                         | ●                         |
| PCA (Parking Collision Avoidance Assist)   | X                                      | X                         | ●                         |
| LKA (Lane Keeping Assist)  | X                                      | X                         | ●                         |
| LFA (Lane Following Assist)  | X                                      | X                         | ●                         |
| FCA (Forward Collision Avoidance Assist) - Car, Pedestrian, Cyclist and Junction Turning | X                                      | X                         | ●                         |
| BCA (Blind Spot Collision Avoidance Assist)  | X                                      | X                         | ●                         |
| SEW (Safe Exit Warning)  | X                                      | X                         | ●                         |
| RCCA (Rear Cross Traffic Collision Avoidance Assist)                                     | X                                      | X                         | ●                         |
| BVM (Blind Spot View Monitor)  | X                                      | X                         | ●                         |
| HBA (High Beam Assist)   | X                                      | X                         | ●                         |
| DAW (Driver Attention Warning) with Lead Vehicle Departure Alert                         | X                                      | X                         | ●                         |
| Smart Cruise Control   | X                                      | X                         | ●                         |
| Rear View Monitor with Dynamic Parking Guidelines  | ●                                      | ●                         | ●                         |
| Parking Sensors  | X                                      | Front + Rear              | Front + Rear + Side       |
| SVM (Surround View Monitor)  | X                                      | X                         | ●                         |
| Passive Safety   |  |                           |                           |
| Cruise Control   | ●                                      | ●                         | X                         |
| Rear View Camera   | ●                                      | ●                         | X                         |
| Surround View Camera   | X                                      | X                         | ●                         |
| Rain Sensing Wipers  | ●                                      | ●                         | ●                         |
| Rear Occupant Alert (w/o sensor)   | ●                                      | ●                         | ●                         |
| Child Anchor Upper & Lower (Rear)  | ●                                      | ●                         | ●                         |
| Height Adjustable Front Seat Belts   | 3                                      | 3                         | 3                         |
| SRS Airbags  | 2                                      | 6 (Front, Side & Curtain) | 6 (Front, Side & Curtain) |
| Security   |  |                           |                           |
| Smart Key with Push Start Button   | ●                                      | ●                         | ●                         |
| Immobilizer  | ●                                      | ●                         | ●                         |
| Central Door Lock (Driver + Passenger)   | ●                                      | ●                         | ●                         |
| Seating  |  |                           |                           |
| Seat Material  | Cloth                                  | Leather                   | Artificial Leather        |
| Seat Color   | One-Tone Black                         | Two-Tone Navy Misty Grey  | One-Tone Carmine Red      |
| Seat Adjustment (Driver + Passenger)   | Manual (6-way Driver +4-way Passenger) | Powered (8-way)           | Powered (8-way)           |

● = Available    X = Not Available



| FEATURES  | ALPHA                 | FWD                                       | HEV                                       |
|---|-----------------------|---|---|
| Seat Adjustment (Height Adjuster)                     | Driver                | Driver + Passenger                        | Driver + Passenger                        |
| Lumbar Support (Driver)                               | X                     | 2-way                                     | 2-way                                     |
| Height Adjustable Head Rests (Driver + Passenger)     | Up/Down               | Up/Down                                   | Up/Down                                   |
| Heated Seats  | X                     | ●   | ●   |
| Split Fold Rear Seats (60:40)                         | ●                     | ●   | ●   |
| Center Console Cup Holder                             | ●                     | ●   | ●   |
| Seat Back Pocket (Driver + Passenger)                 | ●                     | ●   | ●   |
| Seat Back Panel with Pocket (Driver + Passenger)      | X                     | ●   | ●   |
| Lights  |                       |   |   |
| LED Head Lamps  | LED Lamps (Multi MFR) | Dual LED Lamps<br>(Low & High Projection) | Dual LED Lamps<br>(Low & High Projection) |
| LED Daytime Running Lamps                             | ●                     | ●   | ●   |
| Auto Light Control                                    | ●                     | ●   | ●   |
| LED High Mount Stop Lamp                              | ●                     | ●   | ●   |
| Fog Lamps (Front)                                     | X                     | LED MFR                                   | LED MFR                                   |
| Side Repeater Lamps                                   | Outside Mirror        | Outside Mirror                            | Outside Mirror                            |
| Rear Combination Lamps                                | LED + Bulb            | LED                                       | LED                                       |
| Console Lamp  | STD                   | LED                                       | LED                                       |
| Room Lamp (2nd Row)                                   | Bulb                  | LED                                       | LED                                       |
| Luggage Lamp  | Bulb                  | LED                                       | LED                                       |
| Mood Lamp   | X                     | X   | ●   |
| Welcome Light   | ●                     | ●   | ●   |
| Glass/ Rear View Mirror                               |                       |   |   |
| Electrochromic Mirror                                 | ●                     | ●   | ●   |
| Outside Door Mirrors with Integrated Side Indicator   | Body Color            | Body Color                                | Body Color                                |
| Electric Outside Door Mirrors (Adjust/Heated/Folding) | ●                     | ●   | ●   |
| Windscreen & Front Door Glass                         | Tinted + Solar        | Tinted + Solar                            | Tinted + Solar                            |
| Windscreen with Accoustic Film                        | ●                     | ●   | ●   |
| Exterior Features                                     |                       |   |   |
| Radiator Grille                                       | Paint                 | Glossy Black                              | Glossy Black                              |
| Bumper  | Body Color & Black    | Matte Chrome Coating                      | Matte Chrome Coating                      |
| Molding Side Sill                                     | Non Painted           | Non Painted                               | Non Painted                               |
| Molding Door Garnish                                  | Silver Paint          | Matte Chrome Coating                      | Matte Chrome Coating                      |
| Molding Beltline                                      | Satin Finish          | Satin Finish                              | Satin Finish                              |
| Panoramic Sunroof (One-Touch)                         | X                     | ●   | ●   |
| Roof Rack   | X                     | ●   | ●   |
| Body Colored Door Handles                             | ●                     | ●   | ●   |
| Wiper Blade   | Conventional          | Conventional                              | Conventional                              |
| Mud Guard   | ●                     | ●   | ●   |
| Hidden Rear Wiper                                     | ●                     | ●   | ●   |
| Shark Fin Antenna                                     | ●                     | ●   | ●   |
| Hands-Free Smart Power Tailgate                       | X                     | ●   | ●   |
| Memory Tailgate                                       | X                     | ●   | ●   |

| FEATURES  | ALPHA   | FWD   | HEV   |
|---|---|---|---|
| Interior Features   |   |   |   |
| Steering Wheel Material   | 4-Spoke ; Poly Urethane                           | 4-Spoke ; Leather                                 | 4-Spoke ; Leather                                 |
| Steering Wheel Control  | Bluetooth w/ Voice Recognition                    | Bluetooth w/ Voice Recognition                    | Bluetooth w/ Voice Recognition                    |
| Steering Switches   | Audio, Call, Voice Recognition,<br>Cruise Control | Audio, Call, Voice Recognition,<br>Cruise Control | Audio, Call, Voice Recognition,<br>Cruise Control |
| Heated Steering Wheel   | X   | ●   | ●   |
| Paddle Shifters   | X   | X   | ●   |
| Auto Up/Down Drivers Window with Safety Function                                | ●   | ●   | ●   |
| Inside Handles  | Metal Paint                                       | Metal Paint                                       | Satin Chrome                                      |
| Door Scuff  | Standard  | Standard  | Standard  |
| Center Fascia (Main Pattern)  | Metal Paint                                       | Metal Paint + Pad Print                           | Metal Paint + Pad Print                           |
| TGS Knob Material   | Soft PVC  | Soft PVC  | Dial Type   |
| Roof Trim   | Cloth   | Cloth   | Cloth   |
| Driver & Passenger Illuminated Sunvisors with Sliding Function                  | ●   | ●   | ●   |
| Glass Vanity Mirror (Driver + Passenger)  | ●   | ●   | ●   |
| 2 x USB Chargers (USB-C) in Front Seat Backs                                    | X   | ●   | ●   |
| 2 x USB Chargers in Front Tray (1 x USB-A & 1 x USB-C)                          | ●   | ●   | ●   |
| 2 x 12 Volt Power Outlets (Boot Side/ Front Tray)                               | ●   | ●   | ●   |
| Wireless Phone Charging   | X   | ●   | ●   |
| Luggage Screen  | ●   | ●   | ●   |
| Console Box   | ●   | ●   | ●   |
| Infotainment & Driver Display   |   |   |   |
| Sounds of Nature  | X   | ●   | ●   |
| Bluetooth Multi-Connection Functionality (Phone/ Media Stream)                  | ●   | ●   | ●   |
| Wired Android Auto with Voice Recognition                                       | ●   | ●   | X   |
| Wired Apple CarPlay with Voice Recognition                                      | ●   | ●   | X   |
| Wireless Android Auto with Voice Recognition                                    | X   | X   | ●   |
| Wireless Apple CarPlay with Voice Recognition                                   | X   | X   | ●   |
| 6 Speaker Sound System (4 Speakers, 2 Tweeters)                                 | ●   | ●   | X   |
| 6 Harman Kardon Speakers + 1 Bass Booster                                       | X   | X   | ●   |
| Supervision cluster (4.2-inch color TFT LCD)                                    | ●   | X   | X   |
| 8" Display Audio  | ●   | X   | X   |
| Curved Display (12.3" Digital Driver Cluster + 12.3" Touch Screen Infotainment) | X   | ●   | ●   |
| Digital Information Display   | ●   | ●   | ●   |
| Infotainment/Climate Switchable Controller                                      | X   | ●   | ●   |
| Air Conditioner   |   |   |   |
| Dual-Zone Auto Climate Control  | ●   | ●   | ●   |
| 2nd Row Vents (Behind Center Console)   | ●   | ●   | ●   |
| Rear Heating Duct (2nd Row)   | ●   | ●   | ●   |
| Auto Defogger   | ●   | ●   | ●   |
| Air Filter  | ●   | ●   | ●   |

● = Available    X = Not Available

# Dealership Network

A strong growing foot print of 29 state-of-the-art dealerships in 16 cities, keeping you covered wherever you are.



| Dealership Name | City                      |
|-----------------|---------------------------|
| Peshawar        | Kia Motors Khyber         |
| Rawalpindi      | Kia Motors Potohar        |
| Azad Kashmir    | Kia Motors Chinar         |
| Abbotabad       | Kia Motors Silk Route     |
| Sialkot         | Kia Motors Sports City    |
| Islamabad       | Kia Motors Murree Road    |
|                 | Kia Motors Metropolis     |
|                 | Kia Motors 9th Avenue     |
| Faisalabad      | Kia Motors Canal Road     |
| Sargodha        | Kia Motors Citrus City    |
| Gujranwala      | Kia Motors Green Fields   |
| Lahore          | Kia Motors Township       |
|                 | Kia Motors Samaa          |
|                 | Kia Motors Ferozepur      |
|                 | Kia Motors Defence        |
|                 | Kia Motors Kings Gate     |
|                 | Kia Motors Festival City  |
| Multan          | Kia Motors City of Saints |
|                 | Kia Motors Golden Sands*  |
| Bahawalpur      | Kia Motors Royal City     |
| Rahim Yar Khan  | Kia Motors United         |
| Hyderabad       | Kia Motors Crossroads     |
| Karachi         | Kia Motors Clifton        |
|                 | Kia Motors South          |
|                 | Kia Motors Port Qasim     |
|                 | Kia Motors Macca          |
|                 | Kia Motors Site           |
|                 | Kia Motors Lucky One      |
| Quetta          | Kia Motors Airport Road   |

\*Coming soon

## Kia Service there where you are

### Warranty

All Kia vehicles come with 4 years or 100,000 km warranty, whichever comes first.

### Hybrid Battery Warranty

The all-new Sportage L comes with 8 years or 160,000 km warranty, whichever comes first.

### First Two Free Services

All Kia vehicles are offered the first two services free.

### Kia Instant Messenger

Your convenience matters to us. Connect with us anytime, anywhere on WhatsApp at 0303 5425420.

### Spare Parts Availability

Spare parts for your Kia vehicle are available through reputable dealerships.

### Kia Roadside Assistance

Kia Roadside Assistance, with its highly trained and technically equipped staff, is a speedy support service for Kia customers who experience a car breakdown.